



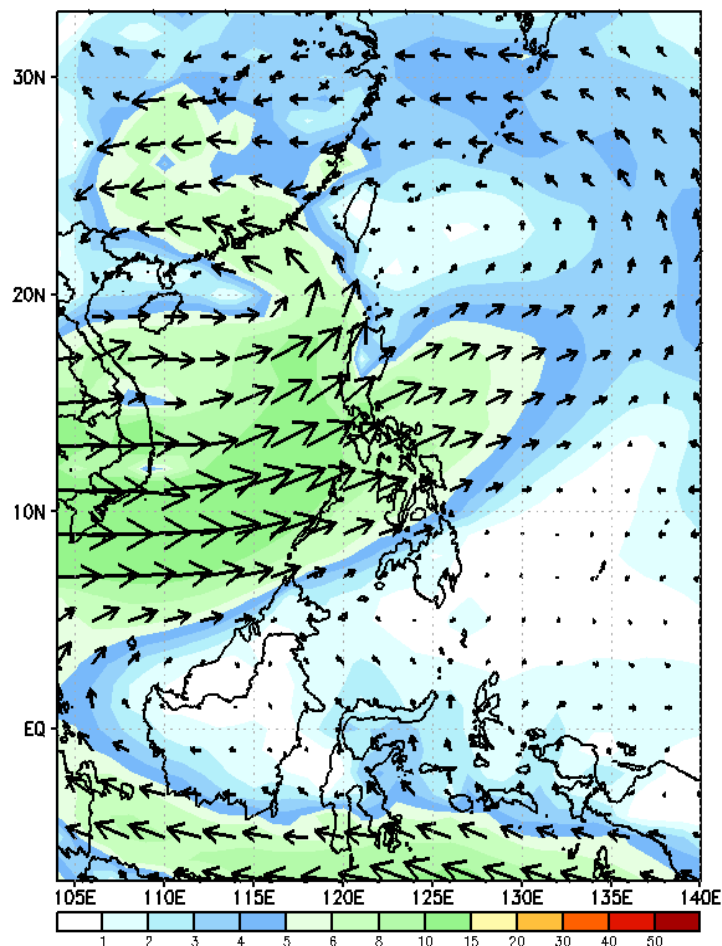
Week 1 & Week 2 Forecast for the Philippines using GEFS Model



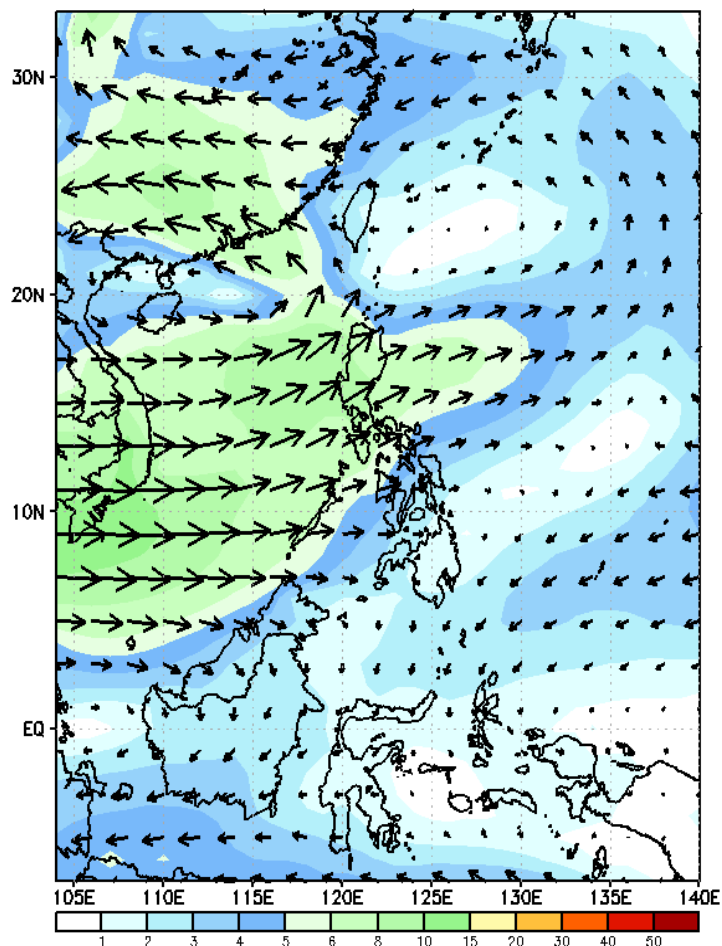
GEFS Week-1 Wind Forecasts:

Week 1: Sep 04-10, 2024

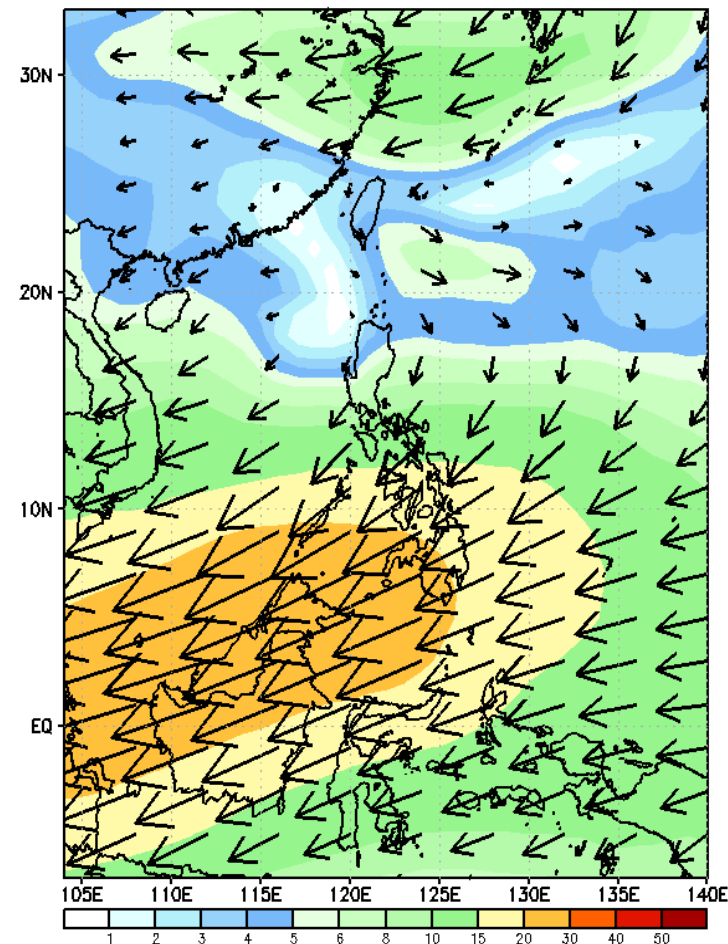
GEFS Week-1 850-hPa Wind Total
Valid: 20240904 - 20240910



GEFS Week-1 700-hPa Wind Total
Valid: 20240904 - 20240910

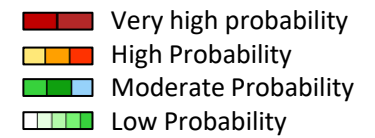


GEFS Week-1 200-hPa Wind Total
Valid: 20240904 - 20240910



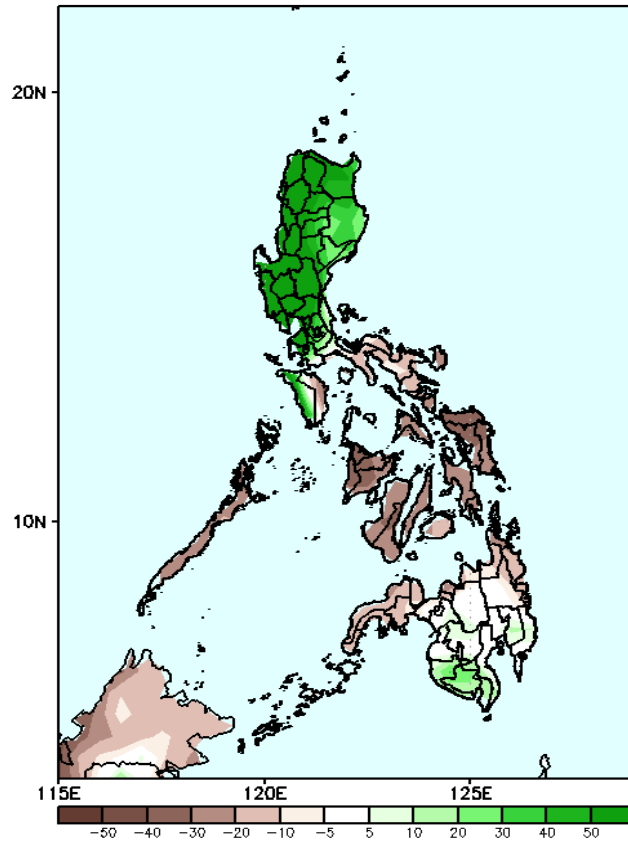
Southwest Monsoon affecting most parts Luzon and Visayas. Easterlies affecting Mindanao.

Precipitation Anomaly and Exceedance Probability > 25/50 mm



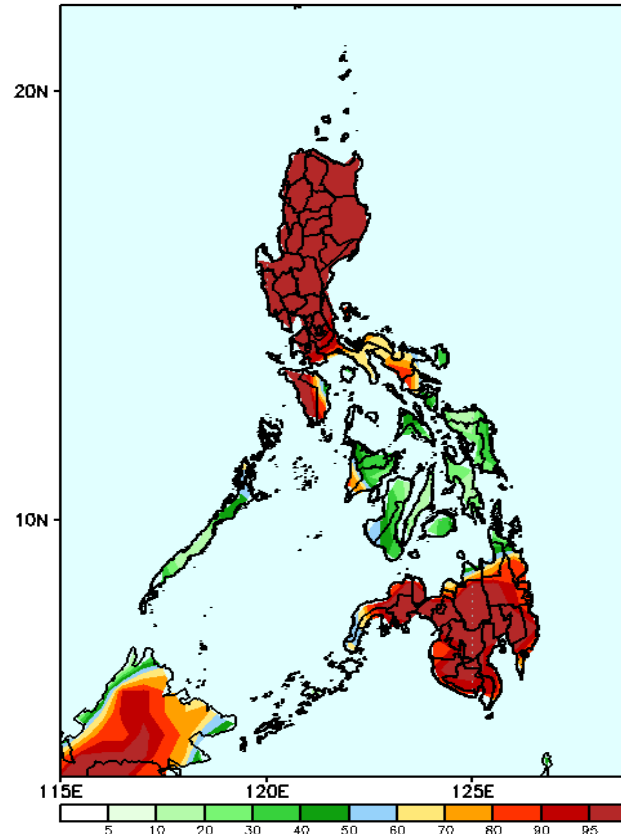
Week 1: Sep 04-10, 2024

GEFS Week-1 Precip Anomaly
Valid: 20240904 - 20240910



Increase of rainfall of more than 50mm is likely in Northern and Central Luzon, CALABARZON except Quezon and Occidental Mindoro, most of SOCCSKSARGEN while 10-50mm rainfall deficit is expected over the rest of the country.

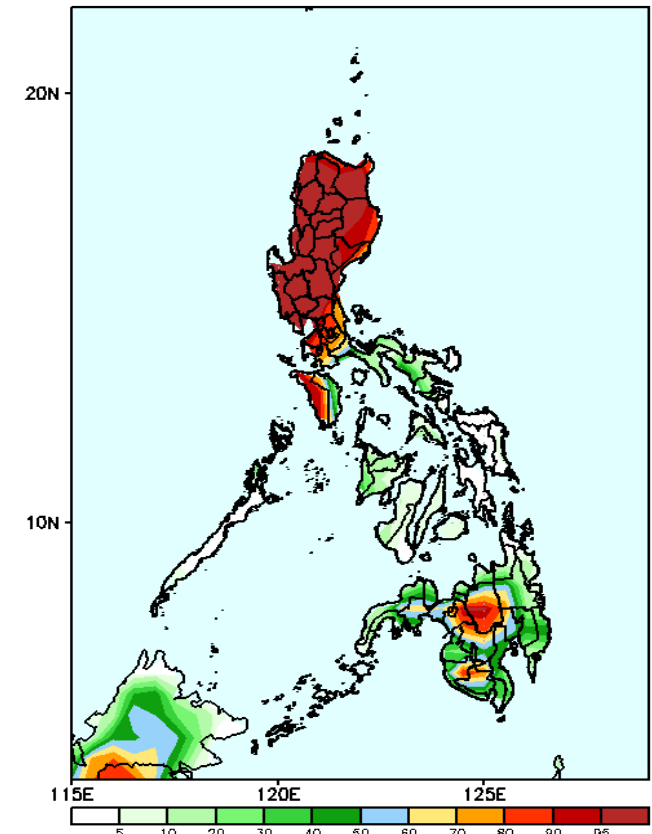
GEFS Week-1 Exceedance Prob. > 25mm
Valid: 20240904 - 20240910



Probability to Exceed 25mm

- High to very high over most of Luzon and Mindanao;
- Moderate to high over Bicol Region, Antique, western part of Iloilo, and northernmost part of Mindanao;
- Low to moderate over the rest of the country.

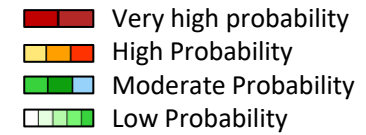
GEFS Week-1 Exceedance Prob. > 50mm
Valid: 20240904 - 20240910



Probability to Exceed 50mm

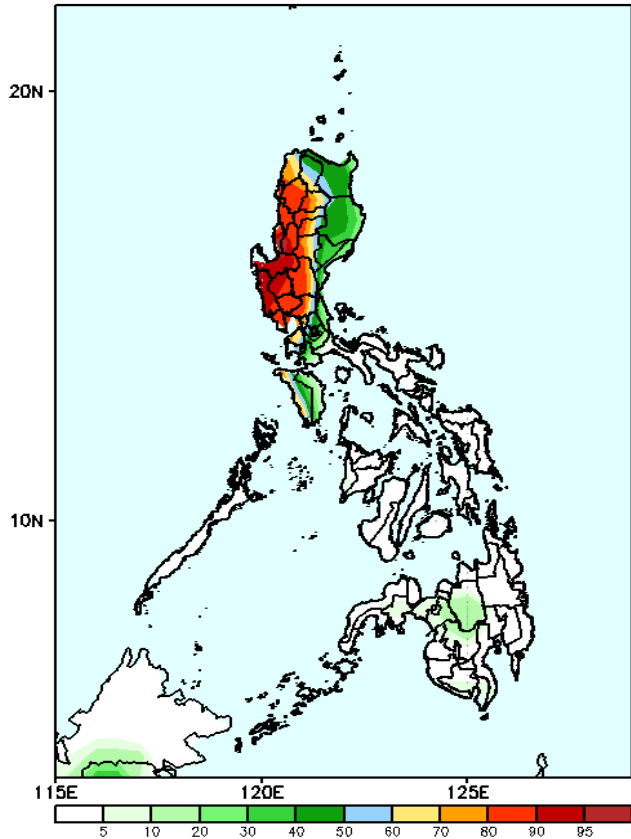
- High to very high over Northern and Central Luzon, NCR, Cavite, Rizal and Occidental Mindoro;
- Moderate to high over Laguna, Batangas, western part of Quezon, Central Mindanao, and some parts of Sultan Kudarat and South Cotabato;
- Low to moderate over the rest of the country.

Exceedance Probability > 100/150/200 mm



Week 1: Sep 04-10, 2024

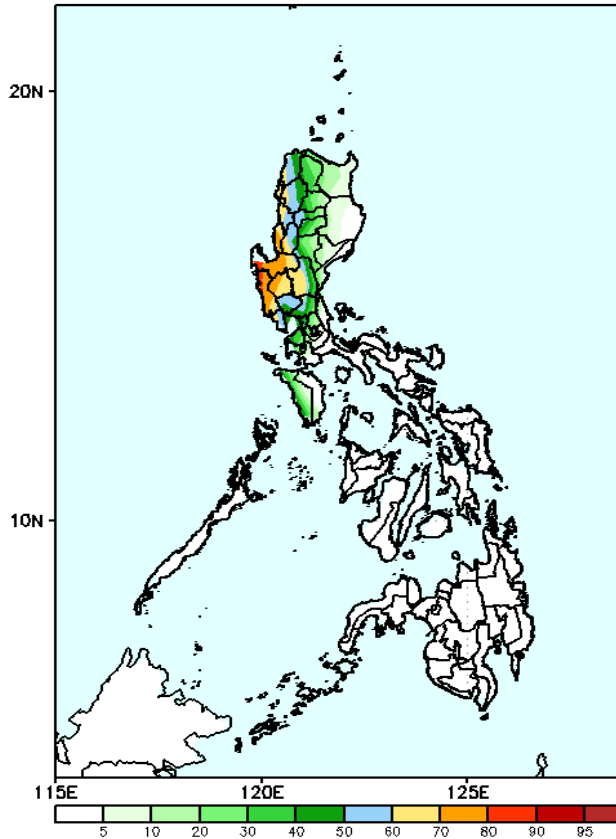
GEFS Week-1 Exceedance Prob. > 100mm
Valid: 20240904 - 20240910



Probability to Exceed 100mm

- High to very high over Ilocos Region, Abra, Benguet, and the western section of Central Luzon;
- Moderate to high over the rest of CAR, Cagayan, Nueva Ecija, Bulacan, NCR, Cavite, Rizal, western part of Batangas and Occidental Mindoro;
- Moderate over the rest of Northern and Central Luzon and the rest of Batangas;
- Low over the rest of the country.

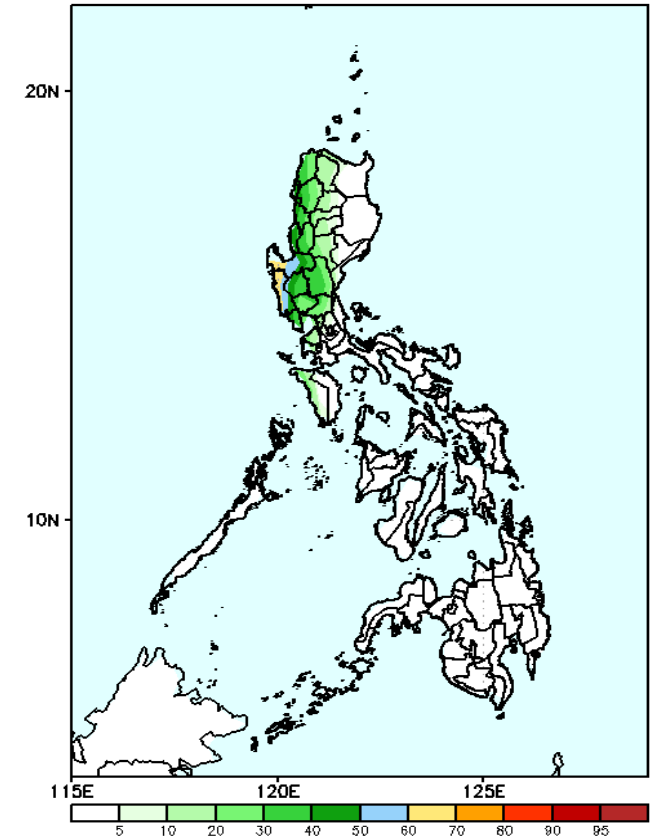
GEFS Week-1 Exceedance Prob. > 150mm
Valid: 20240904 - 20240910



Probability to Exceed 150mm

- Moderate to high over Ilocos Region, Abra, Benguet and Central Luzon except Aurora;
- Low to moderate over the rest of Luzon;
- Low over Visayas and Mindanao.

GEFS Week-1 Exceedance Prob. > 200mm
Valid: 20240904 - 20240910



Probability to Exceed 200mm

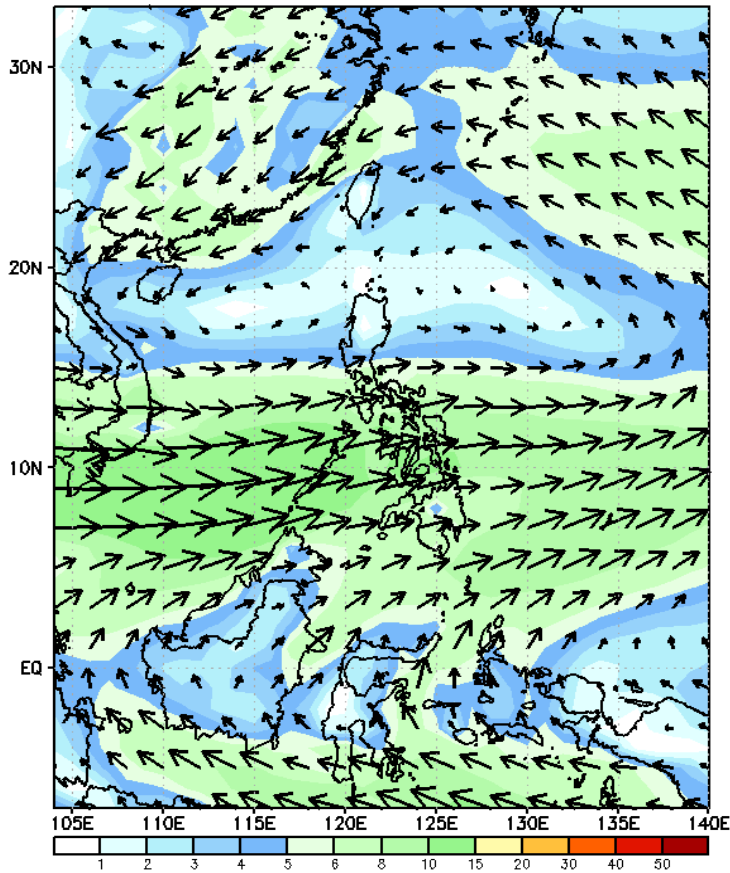
- Moderate to high over Pangasinan and Zambales;
- Low to moderate over the rest of Northern and Central Luzon;
- Low over the rest of the country.



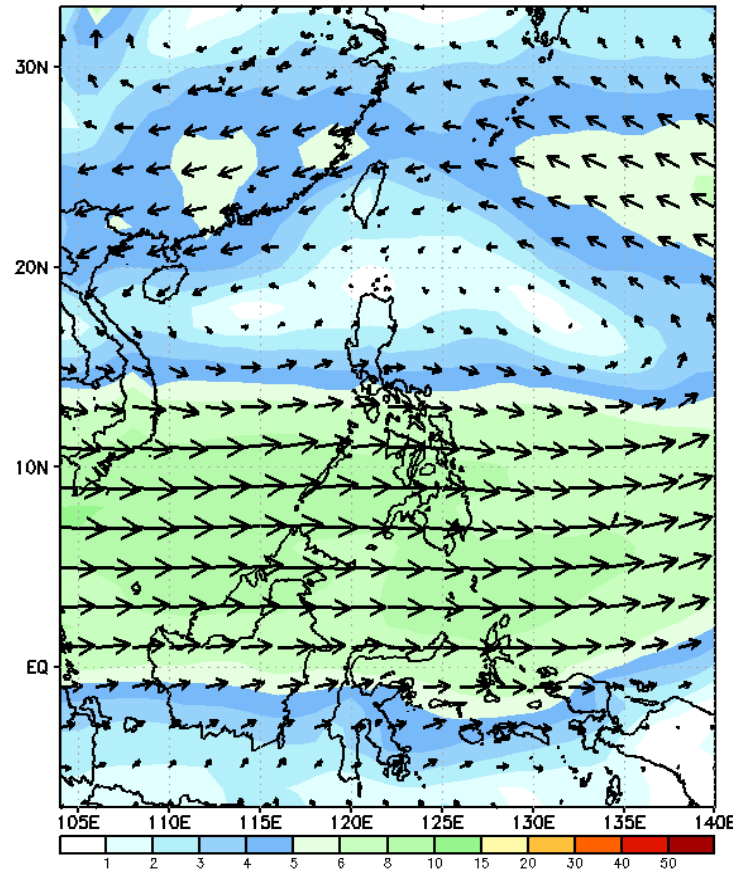
GEFS Week-2 Wind Forecasts:

Week 2: Sep 11-17, 2024

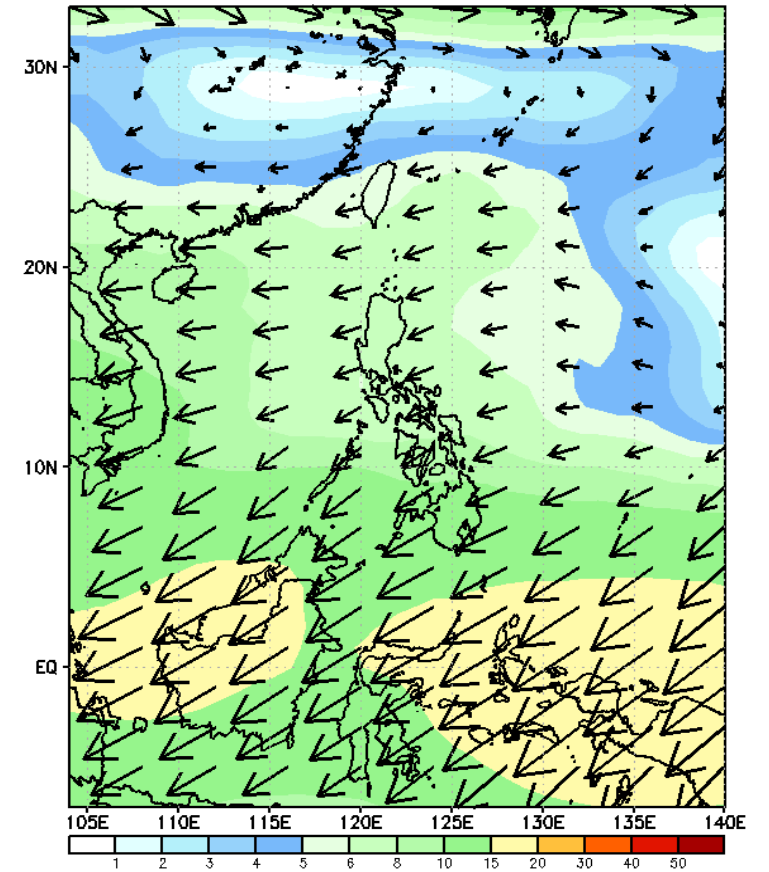
GEFS Week-2 850-hPa Wind Total
Valid: 20240911 - 20240917



GEFS Week-2 700-hPa Wind Total
Valid: 20240911 - 20240917

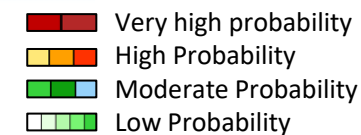


GEFS Week-2 200-hPa Wind Total
Valid: 20240911 - 20240917



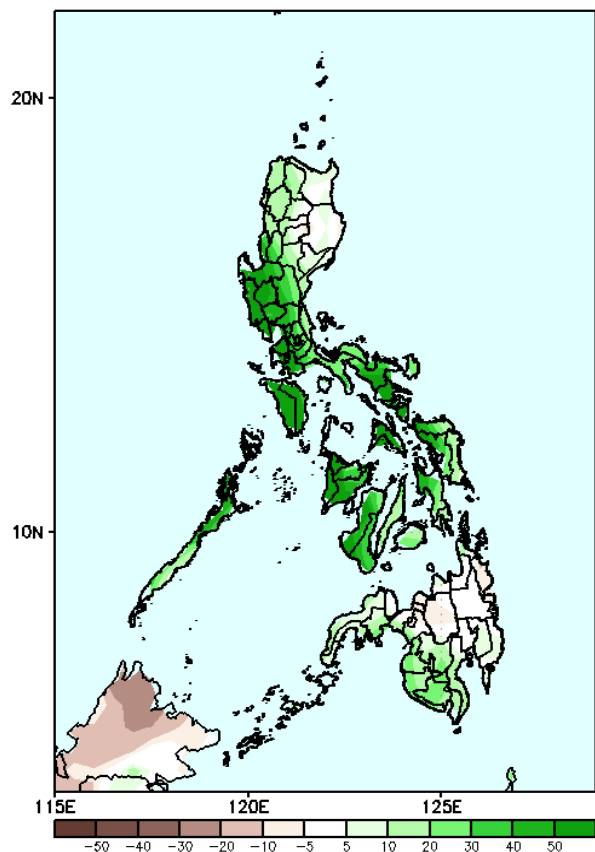
Southwest Monsoon affecting most parts of the country.

Precipitation Anomaly and Exceedance Probability > 25/50 mm



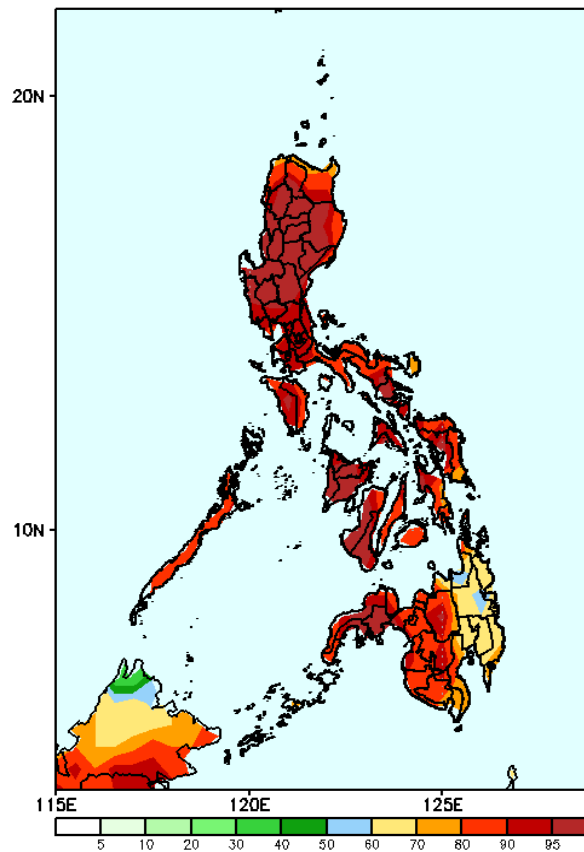
Week 2: Sep 11-17, 2024

GEFS Week-2 Precip Anomaly
Valid: 20240911 - 20240917



Increase of rainfall of more than 50mm across the country

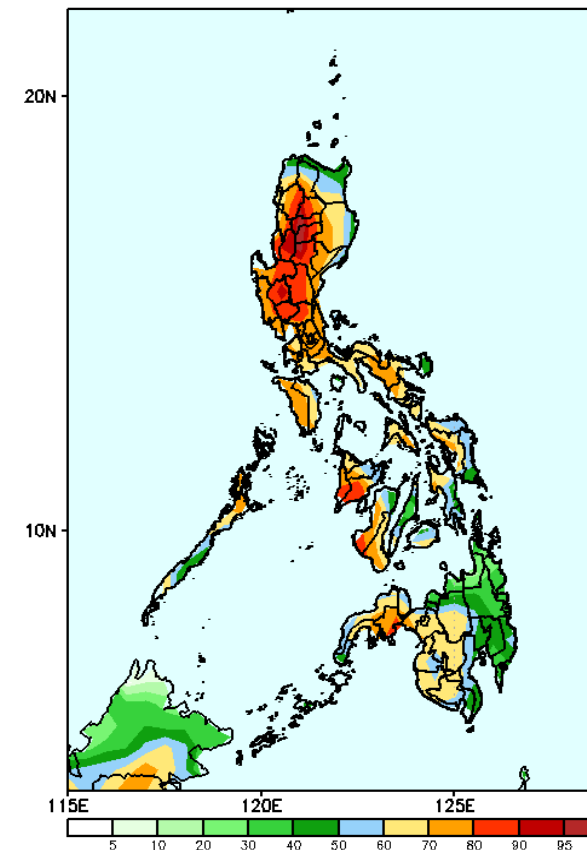
GEFS Week-2 Exceedance Prob. > 25mm
Valid: 20240911 - 20240917



Probability to Exceed 25mm

- High to very high over most of the country;
- Moderate to high over Misamis Oriental and most of Eastern Mindanao.

GEFS Week-2 Exceedance Prob. > 50mm
Valid: 20240911 - 20240917

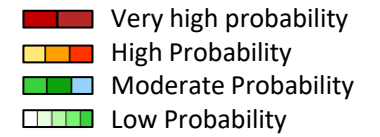


Probability to Exceed 50mm

- Moderate to high over most of Luzon, Visayas, & Western and Central Mindanao;
- Low to moderate over the rest of Mindanao.

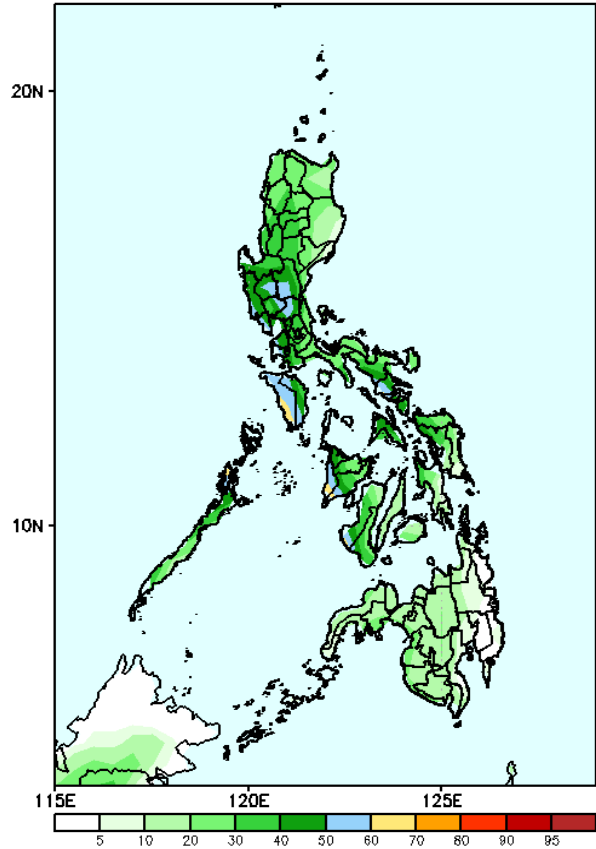


Exceedance Probability > 100/150/200 mm



Week 2: Sep 11-17, 2024

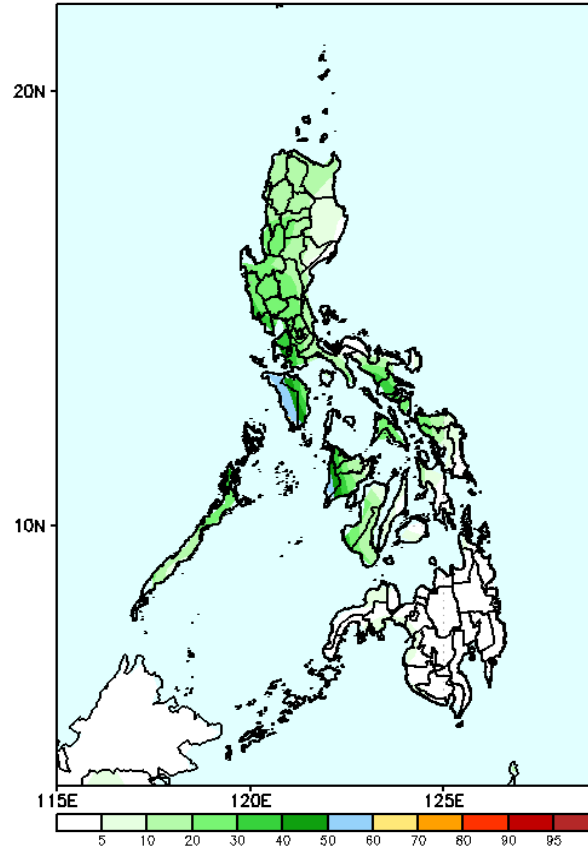
GEFS Week-2 Exceedance Prob. > 100mm
Valid: 20240911 - 20240917



Probability to Exceed 100mm

- Moderate to high over Occidental Mindoro, Antique and western part of Iloilo;
- Low to moderate over the rest of the country.

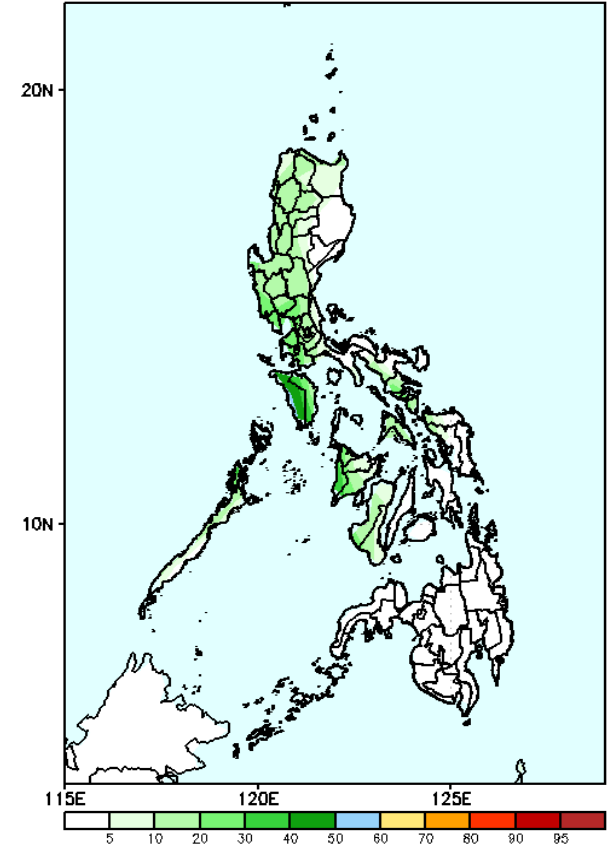
GEFS Week-2 Exceedance Prob. > 150mm
Valid: 20240911 - 20240917



Probability to Exceed 150mm

- Moderate over Occidental Mindoro and Antique;
- Low to moderate over the rest of Luzon and Visayas;
- Low over Mindanao.

GEFS Week-2 Exceedance Prob. > 200mm
Valid: 20240911 - 20240917

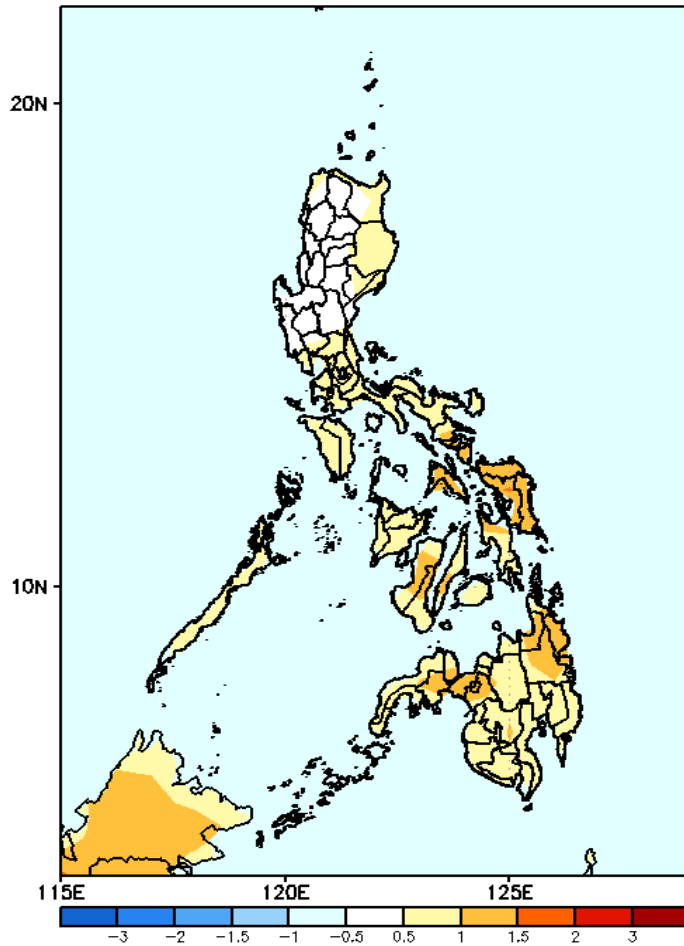


Probability to Exceed 200mm

- Low to moderate over the western sections of Luzon and Visayas;
- Low over the rest of the country.

GEFS Week-1 & 2 Forecasts: T2m Anomaly

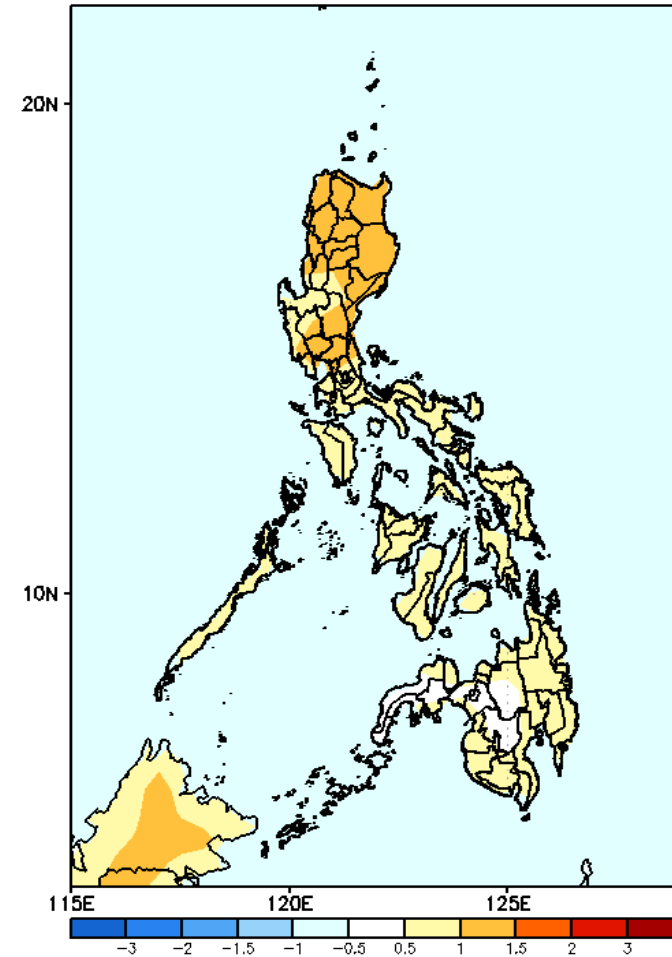
GEFS Week-1 T2m Anomaly
Valid: 20240904 – 20240910



2m Temperature Week 1: Sep 04-10, 2024

Near to slightly warmer surface air temperature will likely be experienced in most parts of the country.

GEFS Week-2 T2m Anomaly
Valid: 20240911 – 20240917



2m Temperature Week 2: Sep 11-17, 2024

Near to slightly warmer surface air temperature will likely be experienced in most parts of the country.